

A Journal of the German Chemical Society

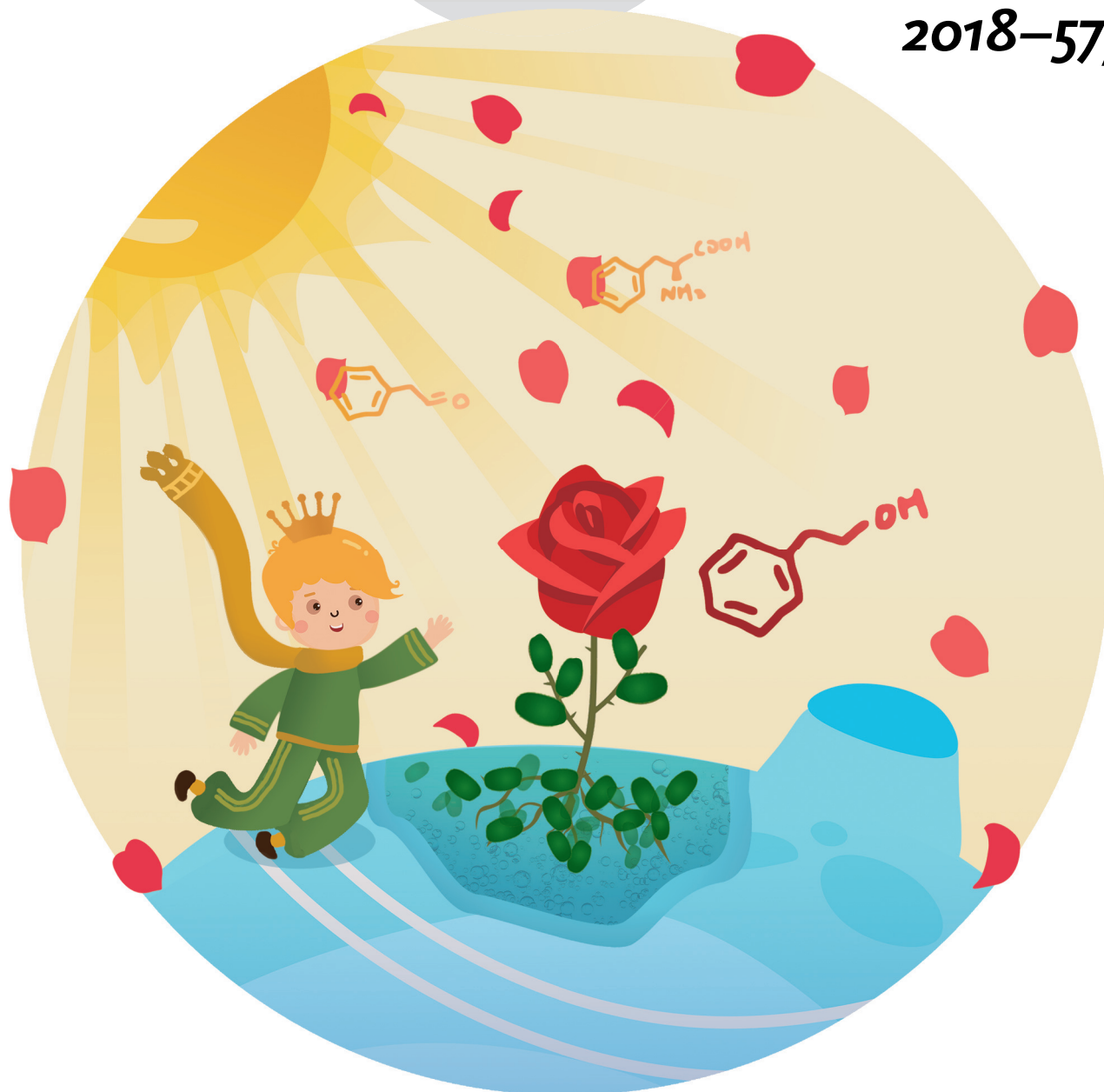
# Angewandte Chemie

GDCh

International Edition

www.angewandte.org

2018–57/49



## Photosynthetic chain remodeling ...

... permits direct conversion of  $\text{CO}_2$  into valuable aromatic compounds. In their Communication on page 15990 ff., P. Xu et al. demonstrate that redirection of the carbon flux toward the shikimate pathway enables 2-phenylethanol to be produced from  $\text{CO}_2$  and solar energy. Their findings also provide novel insights into the plasticity of the cyanobacterial photosynthetic chain, which could be valuable for improving the photosynthetic efficiency of plants and the design of synthetic autotrophs.

WILEY-VCH